



Brooks Brothers® Women's Quilted Jacket BB18601

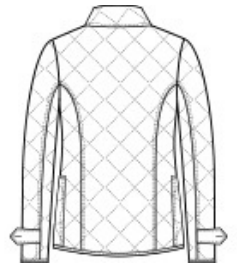
With a flattering, low-profile fit and a refined look, this supple diamond-quilted jacket is designed to resist water and provide warmth when you need it.

- 100% polyester shell and lining
- 2.9-ounce polyfill insulation
- Brooks Brothers tie-stripe hanging loop
- Faux horn Brooks Brothers logo buttons
- Front patch pockets
- Adjustable tabs at cuff
- Brooks Brothers tartan plaid-bound interior seams and lined front pockets
- Interior patch pocket with faux horn Brooks Brothers logo button closure

**



front



back

HOW TO MEASURE



BUST

Measure under the arm and around the fullest part of the bust with arms down, keeping tape horizontal.

SIZE CHART

	XS	S	M	L	XL	2XL	3XL	4XL
Size	2	4/6	8/10	12/14	16/18	20/22	24/26	28/30
Bust	32-34	35-36	37-38	39-41	42-44	45-47	48-51	52-55

COLOR INFORMATION



Deep Black
PMS BLACK C



Night Navy
PMS 4280C